



Today's Date: 5/6/24

From: Jonie Anderson
Post Falls Highway District
5629 E Seltice Way
Post Falls, Idaho 83854
208.765.3717
contactus@postfallshd.com

Agency Notification:

| | | |
|-------------------------------|----------------------|-------------------|
| Kootenai County Sheriff | PF Street Department | City of PF |
| PF Police Department | School District | Keller Associates |
| Kootenai County Fire & Rescue | Post Office | |
| Kootenai County Dispatch | City Link | |

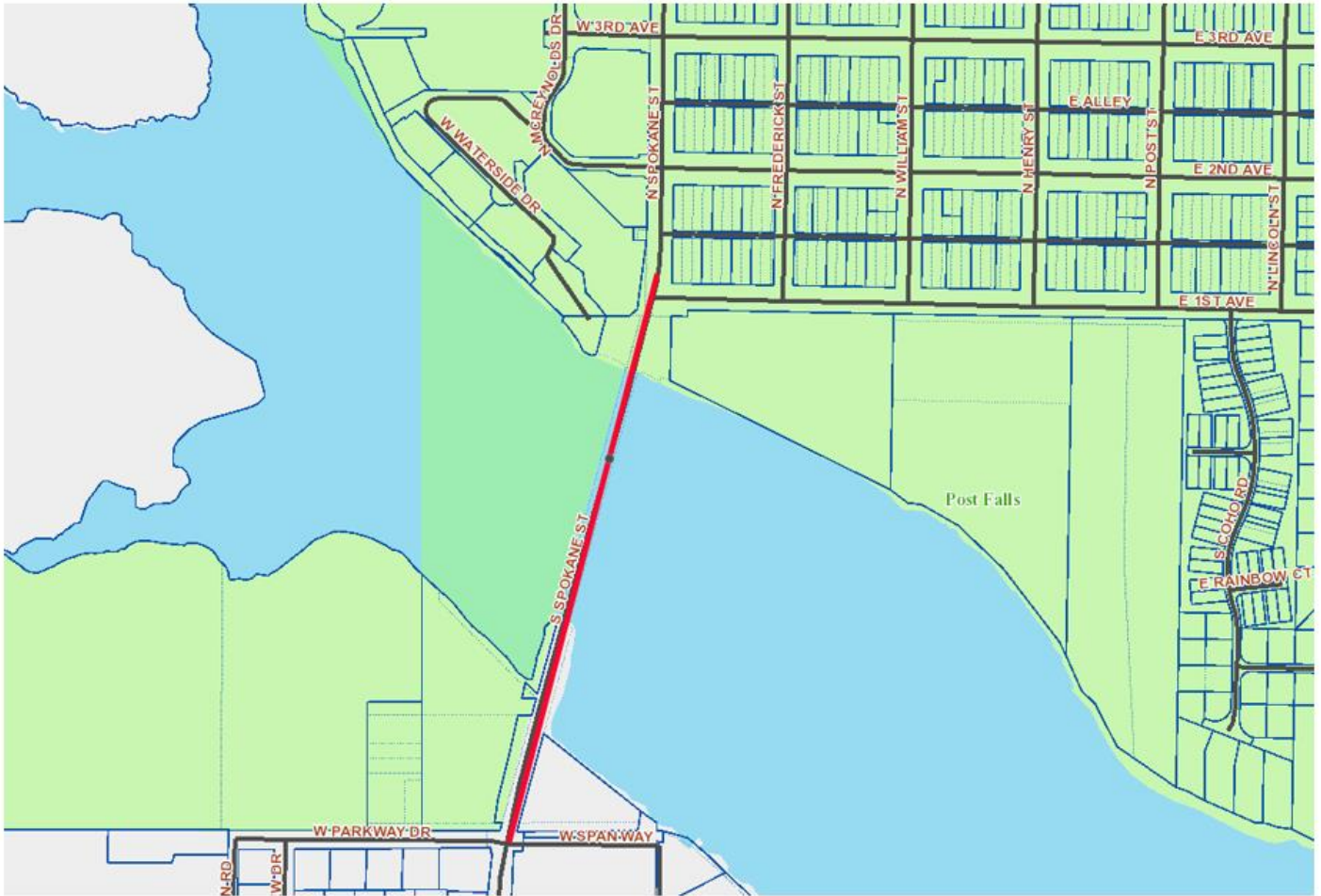
Lane Closure

START DATE: **Monday, May 9, 2024**
END DATE: **Friday, Sept 30, 2024**
LOCATION: **Spokane Street Bridge**

TYPE OF WORK: **Bridge Repairs**
Single Lane on Bridge - Signals will be in place – EXPECT DELAYS

See second page for location map

www.postfallshd.com



BRIDGE REPAIRS BEGINNING MONDAY, May 6, 2024 – Sept 27, 2024

SINGLE LANE ON BRIDGE – TRAFFIC SIGNALS WILL BE IN PLACE

EXPECT DELAYS